



MC100BTFX / W2X

Fast Ethernet 10/100Base-TX to 100Base-FX Switching Converter



KEY FEATURES

- Comply with IEEE 802.3 10Base-T, 802.3u 100Base-TX & 100Base-FX Standard
- Store and Forward Switching Mechanism
- Auto-Cross over for MDI/MDIX in TP port
- 10/100Mbps Auto-Negotiation in TP port
- Support 1K MAC address
- Support 48K Byte Packet Buffer
- Support Link Alarm
- Support Power/FDX/FX & TP Link Activity/FX & TP Speed LED
- Support Switch mode & Pure converter mode
- Voltage supervisor

DESCRIPTIONS

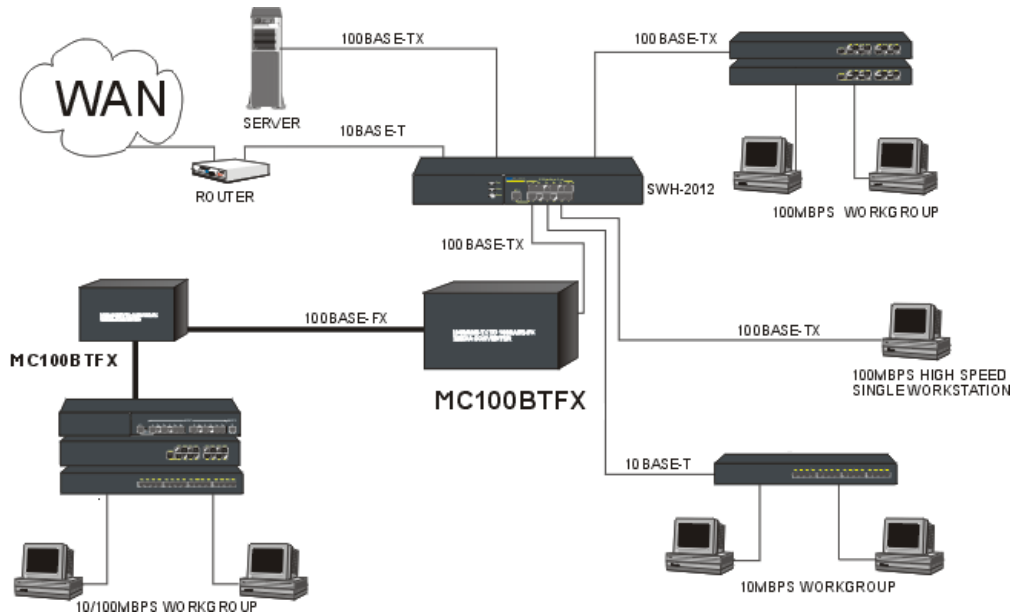
The MC100BTFX / W2X Converters from Betterbox Communications are compactsize units and fulfill the FCC emission standards. This converter converts 10/100Base-TX to 100Base-FX with LED diagnostics for Power, Activity, Link and Full Duplex / Half Duplex operation. All of are fully compliant with the IEEE 802.3 & 802.3u Fast Ethernet standards and feature one STP-RJ45 10/100Base-TX port as well as one Fibre Optic 100Base-FX (SFP/SC/ST/MTRJ) port.

The MC100BTFC/FT/FMR is used in applications where multimode fibre is installed while the MC100BTSM (SM-30/50/60/80/100) can be used where single mode fibre cables are in use. In single mode applications distances up to 10,000m/30,000m can be achieved. Each unit is powered by an external power supply. Installation of the Fast Ethernet converter is simple and straightforward. The powerful features are as 10/100 Auto Negotiation, Auto cross over for TP port, Fibre Link Alarm, Voltage supervisor, and support switch mode & pure converter mode.

BETTERBOX COMMUNICATIONS Ltd
43 BURNERS LANE SOUTH
KILN FARM, MILTON KEYNES, MK11 3HA
Tel (01908) 560200 Fax (01908) 565533
Email: sales@betterbox.co.uk



APPLICATION



SPECIFICATIONS

Standard

IEEE 802.3 10Base-T
IEEE 802.3u 100Base-TX & 100Base-FX

Interface

10/100Base-T: 1X RJ45 connector
100Base-FX: 1X SC simplex connector
SFP Fibre for option

Switching Method

Store and forward

Data Transfer Rate

200 Mbps-Full duplex

MAC Table & Memory Buffer

MAC address table :1K
Memory buffer:48K

Filtering Rate

Filt. Rate - Ethernet: 14,880 pps
Filt. Rate - Fast Ethernet: 148,800 pps

Power

Ext. Power Supply, DC 5V, 1.6A
Power consumption: 5 W

Typical Operation Temperature

Operation: 0° ~ 50
Storage Temperature: -20° ~ 60
Humidity: 5% ~ 90% non-condensing

Dimension and Weight

Size: 71 x 97 x 26 mm (WxDxH)
Shipping Weight: 0.6KG

Emission/Safety

FCC Class A, CE

ORDER INFORMATION

Multi-Mode

MC100BTFC
MC100BTFT
MC100BTFMR

Single-Mode

MC100BTSM

Single-Mode-WDM

MC100W2A (SM-20/40)
MC100W2B (SM-20/40)

BETTERBOX COMMUNICATIONS Ltd
43 BURNERS LANE SOUTH
KILN FARM, MILTON KEYNES, MK11 3HA
Tel (01908) 560200 Fax (01908) 565533
Email: sales@betterbox.co.uk